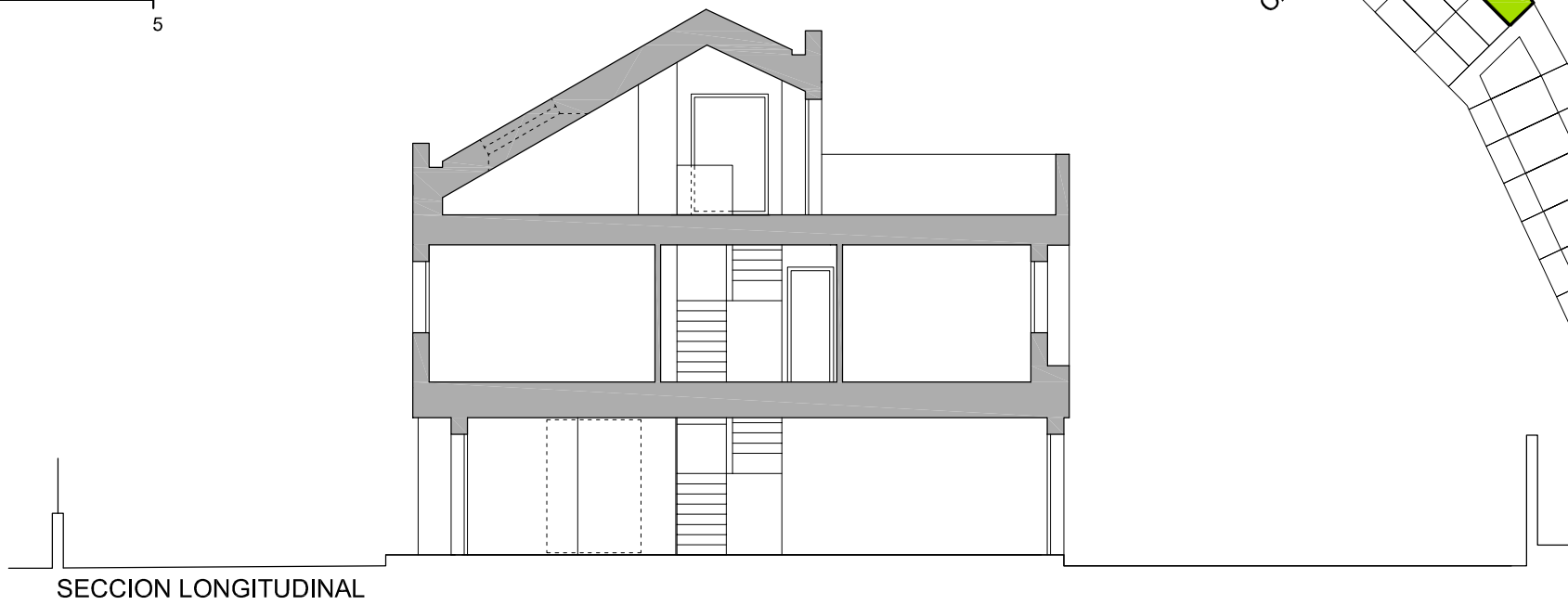
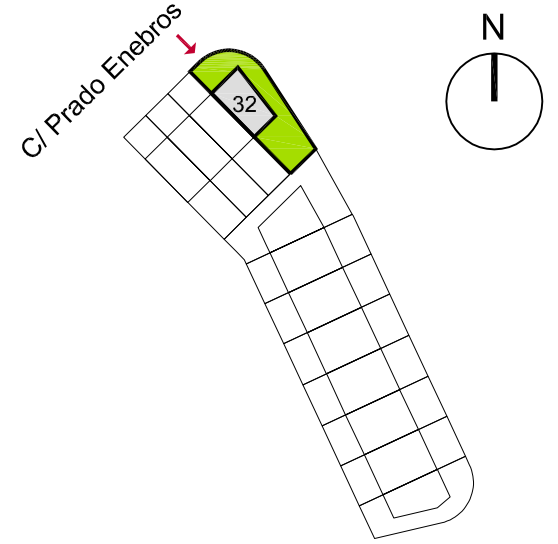
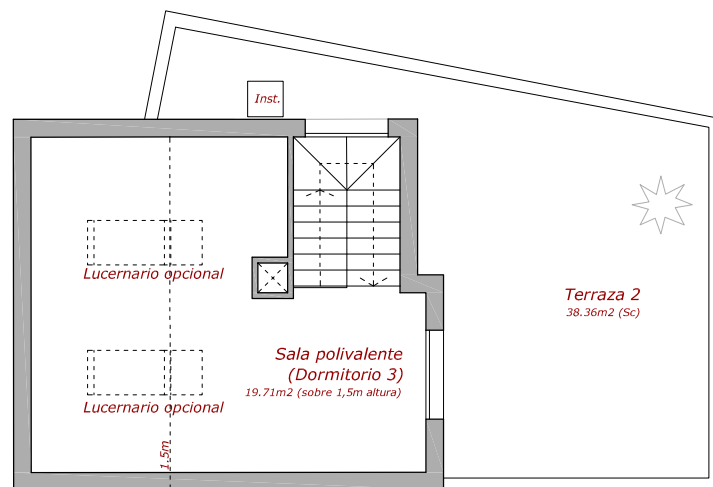


SUP. PARCELA: 237 m²
 SUP. UTIL: 157.19 m² (>1.5m altura)
 SUP. CONSTR. INTERIOR: 183.52m² (+16.30m² con altura <1.5m)
 SUP. CONSTR. EXT. (patio y terrazas): 109.30 m²
 SUP. CONSTR. TOTAL: 309.12 m²

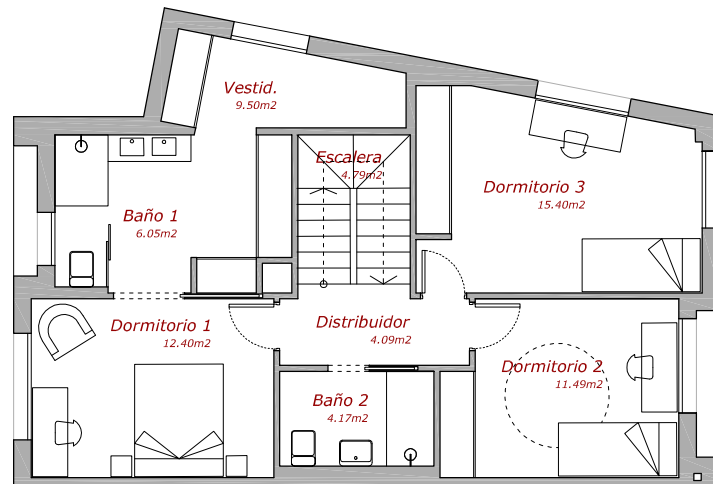
12 VIVIENDAS UNIFAMILIARES COLMENAR VIEJO, MADRID



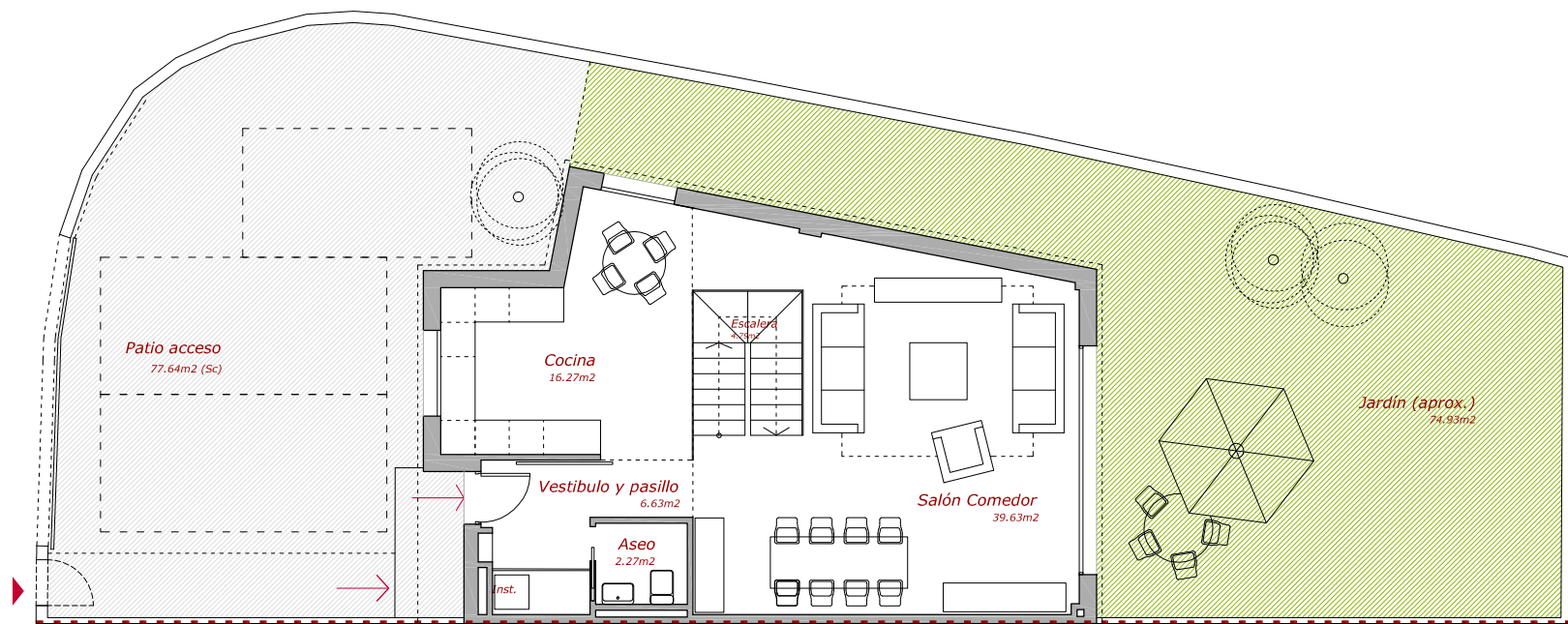
SECCION LONGITUDINAL



PLANTA BAJO CUBIERTA



PLANTA PRIMERA



PLANTA BAJA